



# The Fifth Annual Spring Symposium & Advanced Master Gardener Volunteer Training

## March 29, 2008



### Liza Lightfoot, Avant Gardening & Landscaping:

*Lightfoot is a Madison Landscape Architect and President of Avant Gardening and Landscaping, Inc. For 23 years, AG&L has used and developed organic techniques in its landscaping practices with great success. She is also the founder of a non-profit organization called Kidlinks World, Inc. With Kidlinks, Lightfoot has led several work projects that support underserved children and AIDS orphans in Africa by building and supporting food gardens and playgrounds.*

**Gardening Green** will discuss techniques for building healthy soil and plants. Participants will be introduced to concepts of plant selection and sighting in relation to a "green garden". Also touched upon will be weed control techniques, companion planting and tips for organic pest control. Finally, ideas for low input lawn care and caring for your landscape will be presented



### Les Werner, UW-Stevens Point: Werner is a lecturer in Urban Forestry in the College of Natural Resources located at the University of Wisconsin-Stevens Point.

*Professor Werner instructs courses in Arboriculture, Amenity Forestry, Tree Structure and Function, and Urban Forestry. In addition, he serves as the Faculty Advisor to the UWSP Chapter of the Student Society of Arboriculture, a special interest group within the International Society of Arboriculture. Werner has over 15 years experience as a commercial and a municipal arborist and 3 years experience as an Instructor of Urban Forestry from Southeastern Illinois College.*

**Ecology of Urban Trees** explores a woody plant's native ecosystems and parlays it into how we choose the plants for the places we live, explain their successes and, in some cases, their failures.



### Don Hendricks, Green Bay Botanical Garden:

*Hendricks has been a Registered Consulting Arborist belonging to the American Society of Consulting Arborists since 1981. He evaluates trees as an independent consultant and handles litigation cases where the trees have been involved in a dispute. He also belongs to the International Society of Arboriculture and Wisconsin Arborist Association.*

*He was Director of the Hayes Regional Arboretum in Richmond, Indiana for 13 years; Director of The Dawes Arboretum in Newark, Ohio for 16 years; Director of the Irving Environmental Center at Acadia University in Nova Scotia for 4 years and has been at Green Bay Botanical Garden since 2004.*

Whether you have planted trees all your life or not, **New Research for Tree Planting** is a review of the up-to-date techniques - problems and solutions. Recent literature shows that 75% of all urban trees are planted too deeply. This causes roots to die in oxygen-deficient soils or to girdle the existing tree by growing up and around the trunk. Trees that should live to 100 are dying at 20-30-years. We will discuss some misconceptions about trees, wounds, compartmentalization and decay.



**Mark Dwyer, Rotary Botanical Gardens.** *Dwyer has been the Director of Horticulture at Rotary Botanical Gardens for almost 10 years. His background is in landscape architecture and urban forestry although his true passion is growing and observing all sorts of plants and plant combinations. He is a 'perennial' presenter at this symposium.*

**Sensational Shrubbery** discusses some wonderful ornamental shrubs that will not only offer color and texture in the landscape, but are also low-maintenance. Looking beyond the ubiquitous in shrubs, this talk will address the use of a wide range of hardy shrubs for sun, shade, tough soils and other challenges. Specific cultural and maintenance information will be provided for all plant material covered as will successful examples of their use in the landscape.

March 29, 2008  
The Fifth Annual Spring Symposium  
& Advanced MGV Training  
**OPEN TO GENERAL PUBLIC**

\_\_\_\_\_ **\$50. Early-bird registration**  
received on or before  
March 1, 2008.

\_\_\_\_\_ **\$60.** Registration received **after**  
March 1, 2008.

### Less \$5 for Rotary Botanical Gardens' Friend-Members

Registration is limited and on a first-come basis; includes refreshments, lunch and resource materials. Refunds must be received in writing by March 27, 2008. Please use separate forms if multiple individuals are registering.

\_\_\_\_\_  
Name

\_\_\_\_\_  
Address

\_\_\_\_\_  
Phone

Method of Payment

- Check  
 Visa  
 MasterCard

Call (608) 752-3885 to register by phone using your credit card.

\_\_\_\_\_  
Credit Card # + V-Code (last 3 digits on back of card)      Exp. date

\_\_\_\_\_  
Signature

Mail payment and registration to:  
Rotary Botanical Gardens  
1455 Palmer Drive  
Janesville, WI 53545

Office use only:



The Fifth Annual  
Spring Symposium &  
Advanced  
Master Gardener Volunteer  
Training

8:00am Check-in and registration, coffee & networking

9:00am Welcome and Introductions

Mike Maddox  
Rock County UW-Extension

9:15am **GARDENING GREEN**

Liza Lightfoot  
Avant-Gardening & Landscaping

--Break with coffee and treats--

10:30am **ECOLOGY OF URBAN TREE SELECTION**

Les Werner  
UW-Stevens Point

--Buffet lunch--

*Vegetarian option available*

*Please alert us to other dietary restrictions we need to  
accommodate (608) 752-3885x17*

1:00pm **NEW RESEARCH WITH TREE PLANTING**

Don Hendricks  
Green Bay Botanic Garden

--Break with coffee and dessert--

2:30pm **SENSATIONAL SHRUBBERY**

Mark Dwyer  
Rotary Botanical Gardens

4:00pm Closing Comments and Door Prize Drawing

Door prizes generously provided by:



Rotary Botanical Gardens is 20-acre not-for-profit organization whose mission is to provide horticulture education to all people. Over 18-themed areas comprise the gardens with over 4000 taxa of plants on the grounds. Regionally, we offer education programs to youth and adults in conjunction with the outdoor collections and promote environmental stewardship throughout. The Garden was founded in 1989 through efforts of the local Rotary clubs. All funding for the garden is independently raised through memberships, donations, grants, and special events.

Directions: from I-90, exit 175A onto East Racine Street. At the first stop-light turn left onto Palmer Drive. Continue on Palmer Drive through the golf course and past the Horticulture Center to the Parker Education Center. Parking is offered at no charge.

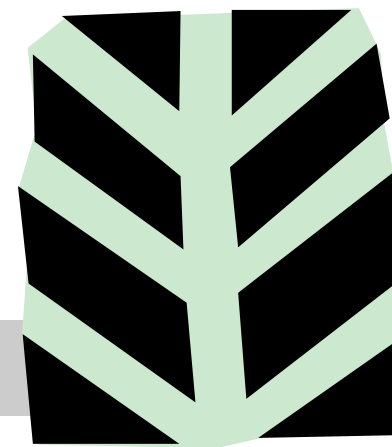
Rotary Botanical Gardens  
1455 Palmer Drive  
Janesville, WI 53545  
(608) 752-3885  
[www.rotarygardens.org](http://www.rotarygardens.org)



An EEO/Affirmative Action employer, UW-Extension provides equal opportunities in employment and programming, including Title IX and ADA requirements. Please make requests for reasonable accommodations to ensure equal access to educational programs as early as possible preceding the scheduled program, service or activity. (711 for Wisconsin Relay)

Rock County UW-Extension  
and  
Rotary Botanical Gardens  
Present

The Fifth Annual  
Spring Symposium &  
Advanced  
Master Gardener  
Volunteer Training  
Open to General Public



March 29, 2008

9am to 4pm

Rotary Botanical Gardens,  
Janesville, Wisconsin