

## Volunteer highlight

RBG has more than plants to show off!

Volunteers are the backbone to RBG. With over 200 volunteers helping with the day to day operations each year, RBG would like to recognize those who help us keep the Gardens growing.

Volunteer: Mary Downing

Years of service: 1989 to present

Activities: Weeding & planting in the Gardens, Winter Wonderland Walk, the moth/butterfly exhibit, gift shop, and youth programs  
Currently: Works part-time in Madison, but still finds time to volunteer where she can.

Recommendation to someone to volunteer at the Gardens: *"It's a great way to get adjusted to the community, find out what's happening, and how to take care of your own garden."*

Volunteer: Carol Garry

Years of service: 2007 to present

Activities: Gift shop and visitor's center volunteer, data entry

What do you like about volunteering here?

"Seeing the visitors— everyone is so nice!"

Quote: *"It's the journey that matters, not the destination"*



## Spotlight On Kids -Halloween Walk

Tentative plans for annual event Oct. 16-18

At the time of this writing, RBG staff is discussing with Spotlight on Kids Productions (SOK) of the annual Halloween Walk event. This family-friendly event has been a tradition at the Gardens for many years, featuring interactive sketches performed by SOK youth actors. Light refreshments and kid-friendly entertainment accompanies the performances. Oh, and don't forget the costumes!

As details emerge regarding this event, information will be posted to the website and in the local media. If you want to help during this weekend, please contact Julie to alert us to your availability— (608) 752 3885x20 or [julie.gibes@ces.uwex.edu](mailto:julie.gibes@ces.uwex.edu).

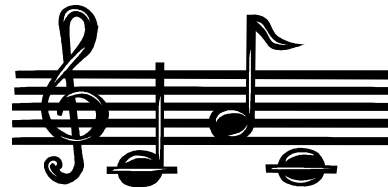
## Music comes to the Gardens

Free concerts available this Fall

In 2007, RBG conducted a survey to determine what people desired out of the Gardens. One surprising request was that of concerts— something that was offered in the past but fell to the wayside as attendance dwindled.

RBG invites you to come once again to hear the sound of music in the Gardens!

The local folk/bluegrass band, *Southwind*, will perform on September 21; *The Rock Prairie Combo* on October 12. Both performances begin at 4pm and light refreshments will be available for purchase.



## RBG Volunteer Potluck

Rescheduled to Tuesday, October 14, 5:30pm

Join friends, family and volunteers for the annual fall volunteer potluck at Rotary Botanical Gardens, October 14. The evening will begin with wine and beer available for social time beginning at 5:30pm. Dinner will begin at 6:15— please bring a dish to share. You will need to bring your own utensils and dinnerware.

Entertainment— and we use the word loosely— will be once again provided by RBG staff.

Please RSVP to the Cottage Gardens Gift Shop (752-3885, press 0) to let us know how many will be attending and the type of dish you plan to bring (salad, main dish, dessert, etc.), by October 9, 2008.

Master Gardeners should not confuse this with their annual recognition potluck on October 7— details for that event will be included in the October MGV mailing.

*20% off Everything  
in Cottage Gardens Gifts  
through the month of  
September*



NON-PROFIT  
ORGANIZATION  
U.S. POSTAGE  
PAID  
JANESVILLE, WI  
PERMIT NO.  
1055



## Upcoming events and opportunities

For more information pertaining to any of these events, please call (608) 752-3885 or visit [www.rotarygardens.org](http://www.rotarygardens.org).

- ⊗ **September 21, *Southwind on the Terrace***, 4pm, free music at the Gardens! Local folk/bluegrass.
  - ⊗ **Sept. 27, Saturday Volunteer Workday** Meet at Parker Education Center (visitors' center), 8am to Noon; Bring a friend or the family!
  - ⊗ **October 7, Master Gardener Volunteer Recognition Potluck & Volunteer Fair**, 5:30pm, bring a dish to pass.
  - ⊗ **October 12, *The Rock Prairie Combo***, 4pm, free music at the Gardens! Jazz/rock and easy listening.
  - ⊗ **October 14, RBG Volunteer Potluck**, 5:30pm, bring a dish to pass. Entertainment will be staff and their usual shtick (come anyway). RSVP (608) 752-3885, press 0 (gift shop)
  - ⊗ **October 16-18, Spotlight on Kids Halloween Walk** (Tentative), times/dates to be posted.
  - ⊗ **October 18, Saturday Volunteer Workday** Meet at Parker Education Center (visitors' center), 8am to Noon; Bring a friend or the family!
  - ⊗ **November 15, Saturday Volunteer Workday** , Meet at Parker Education Center (visitors' center), 8am to Noon; Bring a friend or the family!
  - ⊗ **December 6, Chocolate Extravaganza**; Breakfast with Santa 9am to 1pm, Chocolate Extravaganza Dinner, 5pm to 8:30pm. Details posted in upcoming weeks.
  - ⊗ **December 13-31, Holiday Light Show**, 5pm to 8:30pm. Tickets go on sale mid-November with early-bird and Friend-member discounts available for tickets purchased in advance of the show.
- All events subject to change or cancellation.

## July / August Friends New / Renewal Memberships:

### July

Leonard & Judith Holub  
Nancy Nelson  
Pat Starr  
Sharon E. Hough  
Hufcor, Inc.  
Tena Marie Kromrey  
Trudy Hart-Stace  
Richard & Sherry Thurner  
Richard & Karen Peck  
K.A. Piehl & Assoc., LLC  
Mary Jane Knutson  
Alliant Energy Foundation, Inc.

### August

Mark Fuller  
Linda Reinhardt  
Dale & Melanie Buechler  
Sue Havlovick  
LeeAnne Dukes  
Mary & David Sheedy  
Tom Taylor  
Carol & Stephen Garry  
Robert & Donna Davis  
Milly Babcock  
Robert & Carol Anne Johnson

If there is anyone who became a Friend or renewed their Friends membership recently whose name does not appear on this list, please contact Rod Jones, Funds Development Director at 608-752-3885, ext. 19. Omissions are purely unintentional.

*Music in the Gardens*

*September 21*

*October 12*

*4pm on the Terrace*

*Free*