



2008 Calendar of Events

January & February Visitor Center closed weekends; open 8:30 am – 4:30 pm weekdays

8,9,10 WPT Garden Expo, visit us in Madison at the Alliant Energy Center

March 1-2,8-9, 15-16 Winged Wonders: Live Flying Butterflies & Moths; noon – 4:00 pm

6 Public viewing GardenSmart show; 5:30 pm

29 Garden Symposium; Topics TBA

April All Saturdays Mushroom Compost Sale 8 am – 2 pm, Horticulture Center

May All Saturdays Mushroom Compost Sale 8 am – 2 pm, Horticulture Center

3 Volunteer & Master Gardner Plant Division Work Day; 8-Noon

17 Plant Division Sale, plants from Rotary Gardens 8 am-4pm, Horticulture Center

11 Mothers' Day Brunch

22 Volunteer Appreciation Dinner

June 7 Nursery Plant Buying Bus Trip; 7:00 am – 6:00 pm

20-22 Minneapolis Bus Trip; 7:00 am Friday to 6:00 pm Sunday

July 19 Dinner Dance Fund Raiser: 5:30 – 10:00 pm

12 Home Garden Tour

24 Twilight Tour: See the Garden at its Peak; Free Tours; 5:30 – 8:00 pm

Sept 6 Heirloom Vegetable Festival; 9:00 – 5:00 pm

5 Friends-only Fall Plant Sale Preview 9 am-5 pm

6-14 Fall Plant Sale ; 9:00 am – 5:00 pm, Hort. Center

27 Fall Chicago area bus tour; 7:00 am – 6:00 pm

October 16-18 Halloween Walk with Spotlight on Kids Productions; 6:30-8:00 pm

23 Rotary Botanical Gardens Volunteer Potluck; 5:30 pm

Nov 14-16 Cottage Garden Gift Shop Open House & Holiday Sale; open hours

Dec 6 Taste of Chocolate Extravaganza; Breakfast with Santa 9:00 am – 1:00 pm; Taste of Chocolate 5:30 – 9:00 pm

12-14, 19-23, 26-31 Winter Wonderland Walk Light Show and Trains; 5:00 – 8:30 pm



MARK YOUR CALENDAR!

Public Viewing of Rotary Botanical Gardens GardenSmart Show

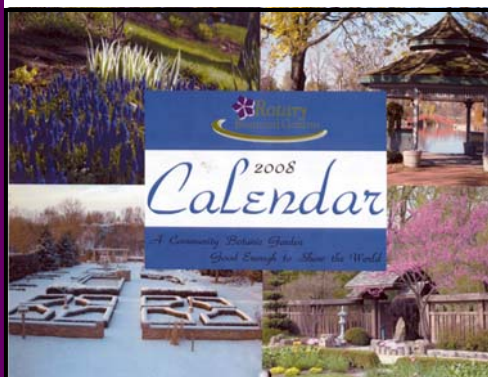
Thursday, March 6; 5:30 pm

GardenSMART is an exciting, informative, unique gardening TV program broadcast across the country on Public Television Stations to 130 million viewers. GardenSMART travels the country visiting beautiful public, private and resort gardens. Rotary Botanical Gardens was featured in 2007. If you missed it,

2007
Winter
Wonderland
Walk
Rotary
Gardens



Join Us!



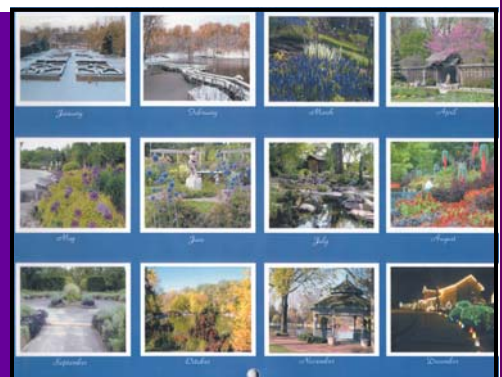
2008 Rotary Botanical Gardens Wall Calendar

Spectacular images of the Gardens all seasons

Wonderful gifts!

\$10 includes tax

Available in the Gift Shop



Inside Grapevine:

Page 2 Director's Message
 Page 3 Volunteers
 Page 4 Dirty Details from Mark
 Page 5 Dec.-Jan. Calendar
 Page 6 Mike's Rambles & Brambles
 Page 7 Funds Development
 Page 8 Staff & Board

Rotary Botanical Gardens is an internationally-themed botanic garden dedicated to International Peace and Friendship. Our mission is to promote education and appreciation of horticulture for all people. For more information about Rotary Botanical Gardens, contact us at 1455 Palmer Drive, Janesville, WI 53545; 608-752-3885; or check out our website: www.rotarygardens.org.

Grapevine is a bi-monthly publication of Rotary Botanical Gardens, published especially for the many Volunteers and Friends of the Gardens. For more information on volunteer opportunities, or with suggestions and submissions for this newsletter, please contact Rotary Botanical Gardens. If you are interested in becoming a Friend of the Gardens, contact Polly.

Rotary Botanical Gardens made more news in 2007! It is YOUR garden ARE YOU PROUD?

It was a spectacular year at RBG and we hope you visited often. This is the time of year when we like to remind you to consider the Gardens in your year-end contributions and tax considerations. Read Polly's article on page 7. We can supply you with any necessary information and materials; you will also find a contribution form at the bottom of this page. It becomes increasingly challenging for non-profits to develop sustainability, so growing better every year takes additional commitment from staff, board, volunteers, Friends of Rotary Botanical Gardens members and donors. Every dollar of support to operate the gardens and its programs comes from charitable contributions and rental fees with no tax based support. Supporting a "quality of life" community asset is worthwhile. Consider the Gardens when you make contributions to reduce tax burden. It provides the Gardens with necessary support while providing tax relief. Talk about a win-win!

Please also consider ongoing support through Friends of Rotary Botanical Gardens memberships if you haven't already. They make thoughtful gifts as well!

Rotary Botanical Gardens thanks you for your support. Everything you do is appreciated by community, regional and national visitors who value and use this local treasure. Above all, staff and volunteers look forward to seeing you soon at the Gardens!

The goal is to make Rotary Botanical Gardens a desired destination that brings recognition and dollars to the Janesville community.

- Became a display/test/trial garden for Ball Horticultural Co. (one of only three botanic gardens in the country asked), the world's largest ornamental seed producer. These display gardens will feature annuals and perennials.
- Became a display/test/trial garden Bailey Nurseries, one of the countries largest plant wholesalers. The Bailey Nursery display will feature roses in the French Formal Rose Garden.
- Display garden for the American Iris Society 2010 national conference.

In the works are:

- Informational/tour DVD.
- Increased garden interpretation through signage and tour systems.
- More of the specialty collections and seasonal displays from Mark that are defining us and setting us apart from other gardens. Plan to see the heirloom pepper and annual vinca displays.
- New color combinations for the Entrance Garden (EVERY visitor was blown away with this year's red theme!) and other seasonal display beds.
- Preparation for the 2009 20th anniversary of the Gardens!

New structural additions and improvements fully funded by generous donors including:

- North Terrace
- Woodland Walk
- Addition to the Shade Garden
- "Where Tears Run Deep" brick path honoring fallen soldiers
- Children's "ABC" garden
- Nancy Yahr Memorial Garden (in progress)



Year-end Giving..... Yes! I'm Proud and want to help support Rotary Botanical Gardens!

Enclosed is my gift to the Rotary Botanical Gardens year-end campaign. I understand that this is a charitable contribution and does not provide Friends membership.

\$5000 ___ \$2500 ___ \$1000 ___ \$500 ___ \$250 ___ \$100 ___ \$50 ___ \$25 ___ Other ___

Other gift _____

Name _____ Address _____

City _____ State _____ Zip _____

___ Check enclosed payable to Rotary Gardens, Inc. attn Polly OR

___ Bill my credit card Type _____ # _____ Expires _____

This gift is _____ in Memory of OR _____ In Honor of _____

Please send notice of this gift to: Name _____

Address _____

Message _____

Thank You!

Your donation is deductible to the full extent of the law.

Breakfast with Santa



Photos by Sam Killian, Janesville Messenger

As Linda Schumacher finished reading the last line of "The Night Before Christmas" to children on Saturday, December 1, Santa himself completed the last line... thrilling the entire room. Children of all ages enjoyed a chocolate themed breakfast provided by HHHFRRRGGH Inn and visited with Santa as he presided over the event. Children were able to sneak into Santa's shop and make a surprise gift for Mom or Dad.

Please plan on attending this event next year with your family. It will be held the first Saturday of December in 2008 and really is an event to mark on your calendar.

3rd Annual Taste of Chocolate

The weather outside was frightful but the dinner was delightful! Determined chocoholics battled the first nasty winter storm to enjoy Rotary Botanical Gardens' 3rd annual Taste of Chocolate. Of the 170 who signed up to attend this event, 100 were able to attend.

The evening began with cocktails which included a chocolate martini special. The dinner began with a waited salad provided by HHHFRRRGGH Inn. Pork Chops specially prepared for the Gardens by the Pork Shoppe Grill were served on a buffet which also included mashed sweet potatoes, Dauphinoise potatoes, a roasted corn and asparagus succotash and a Harvest Vegetable Saute rounded out the meal. HHHFRRRGGHH provided this meal masterminded by their new chef Ken Roehl. Ken also created an ice sculpture complete with the Rotary Botanical Garden logo. It

was a dinner to remember.

The sumptuous chocolate buffet was donated in entirety by the following generous businesses:

- *Annie's Soda Shop Café*
- *Best Events Catering*
- *Cinnamon Teri's*
- *Coldstone Creamery*
- *Fusion 5*
- *HHHFRRRGGH Inn*
- *Mocha Moment*
- *Speakeasy*
- *The Traveling Gourmet*

A special thanks to those who supported this event. A special thank you as well to those who were unable to attend but brought in payment for tickets post-event.

2007 Year End Gift Ideas

Your 2007 year end gift can reduce your income taxes, while providing meaningful support for Rotary Botanical Gardens. Every dollar of support to operate the gardens and its programs comes from charitable contributions and rental fees with no tax based support. No matter what your income, if you itemize, you can almost always lower your income taxes through charitable giving. The amount of income tax savings will depend on your income tax bracket.

Example: *If you are in a 33% tax bracket in 2007 and you itemize your deductions, a \$1,000 gift to the Gardens by Dec. 31 will save you approximately \$330 in 2007 federal taxes. The higher your tax bracket, the more money you may save with a charitable gift.*

Consider making more charitable gifts in those years when you have the most income and are in the top federal income brackets. Giving is, of course, much more as your charitable gifts make an important difference in what the Gardens is able to accomplish.

Some of the ways you can make a charitable contribution with tax benefits include gifts of cash, stock, life insurance, life income and bequests.

Be sure to check with your accountant, tax attorney, or other tax advisor for additional information on how these general rules might apply to your situation.

The Gardens would be pleased to provide you with additional information on any gifts you may be considering. Stop by Rotary Botanical Gardens or call (608) 752-3885. Ask for Polly. Thank you for your support at year end and the rest of the year!

Remember that the strength of not-for-profits is in Friends support. Invest in your gardens with a Friends of Rotary Botanical Gardens membership and give Friends subscriptions as thoughtful gifts this season! More information and Friends of Rotary Botanical Gardens levels are available in a brochure, request one by calling Polly at 608-752-3885 or on-line at

rotarygardens.org

Other Ways to Give "Wish List"

Rotary Botanical Gardens always has needs that you can directly contribute at a variety of levels. Here are some examples, please call us for other ideas:

For Parker Education Center	
LCD Projector	\$1,500
Laptop	\$2,000
New sound system for Parker	\$5,000
Turnstile	\$2,300
Student Internships (annual)	\$6,000
Volunteer Appreciation Dinner and Award Recognition	\$2,500
Automatic gate openers	\$2,000
Gas cards for Grounds	Any denominations!

Call for other "wishes" that might fit your giving preferences. Various levels of sponsorships for events available as well.



1455 Palmer Drive

Janesville, WI 53545

(608) 752-3885

Rotarygardens.org

NON-PROFIT
ORGANIZATION
U.S. POSTAGE
PAID
JANESVILLE, WI
PERMIT NO.
1055



ROTARY BOTANICAL GARDENS STAFF

Ed Lyon~ Executive Director
608-752-3885 ext. 11
edward.lyon@rotarygardens.org

Peggy Kleinhans ~ Finance Manager
608-752-3885 ext. 13
peggy.kleinhans@rotarygardens.org

Janet Tiffany~ Accounting Assistant
608-752-3885 ext. 12
janet.tiffany@rotarygardens.org

Polly Schluter Punzel ~ Director of Development
608-752-3885 ext. 16
polly.schluter@rotarygardens.org

Jessie Viertel~ Facility Rentals Coord.
608-752-3885 ext. 19
jessie@rotarygardens.org

ROTARY BOTANICAL GARDENS BOARD MEMBERS

Gerald Gredler	Rich Gruber
Sally Edelman, <i>Chair</i>	Kenneth Lein
Gary Smith, <i>V. Chair</i>	Tina Lorenz
Maury Frey, <i>Secretary</i>	Rollie McClellan
Chris Goepfert, <i>Treasurer</i>	Ruth Ann Potts
John Anderson	Harold Robb
Iza Goroff	Vicki Schmuck Donalson

Mike Maddox~ Horticulture Educator
608-757-5696
mike.maddox@ces.uwex.edu

Julie Gibes ~ Volunteer Coordinator
608-752-3885 ext. 20
julie.gibes@ces.uwex.edu

Richard Snow~ Facility Maintenance
Jean Saucier~ Gift Shop Manager
608-752-3885

Mark Dwyer~ Director of Horticulture
608-754-1779
mark.dwyer@rotarygardens.org

Larry Olsen~ Landscape Manager
Marv Bue~ Grounds Supervisor
608-754-1786

Gil Sedor
Mary Willmer-Sheedy
Gary Smith
Richard Stark
Robert Tews
Jim Van De Bogart
Doug Venable
Robert Yahr



Holiday Parties

Enjoy Your Holiday
Function at a
Spectacular Site!

Weekday and Weekend Rates
Bar Setup and Bartenders Included
Recommended Caterers Upon Request
Winter Wonderland Walk Lights
(based on availability)
Arrangements Must be Made in Advance
Call Jessie at 608-752-3885 x19